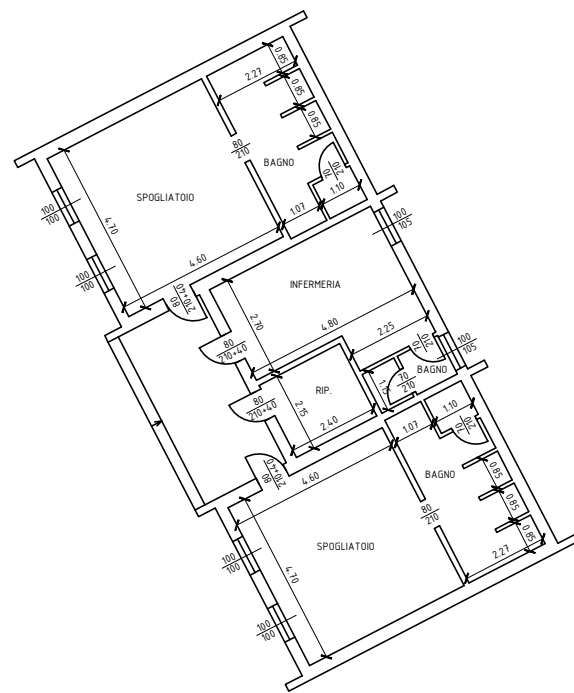
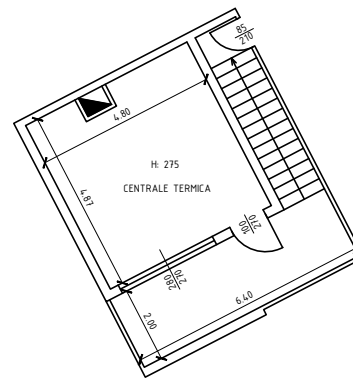


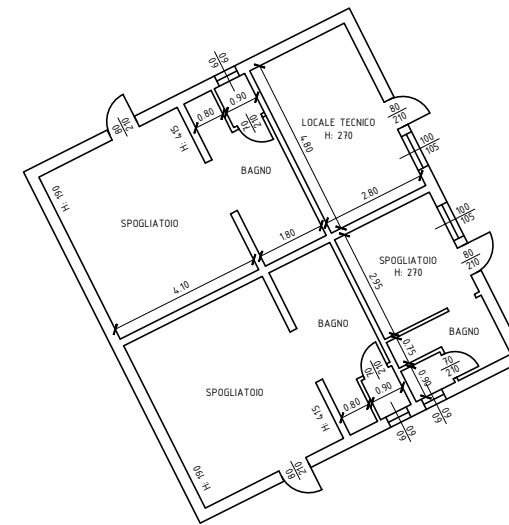
CORPO 6 - SEDE SOCIETA' CALCIO  
Piano Terra



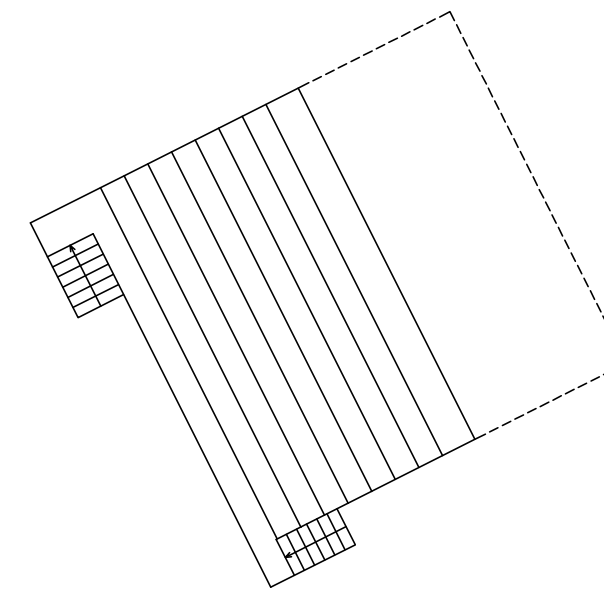
CORPO 8 - SPOGLIATOI CALCIO  
Piano Terra



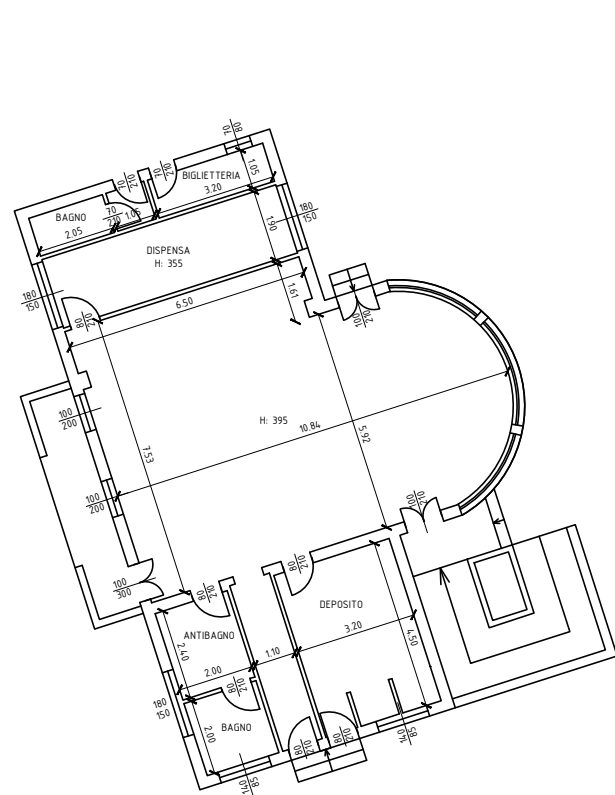
CORPO 7 - LOCALE CALDAIA  
Piano Interrato



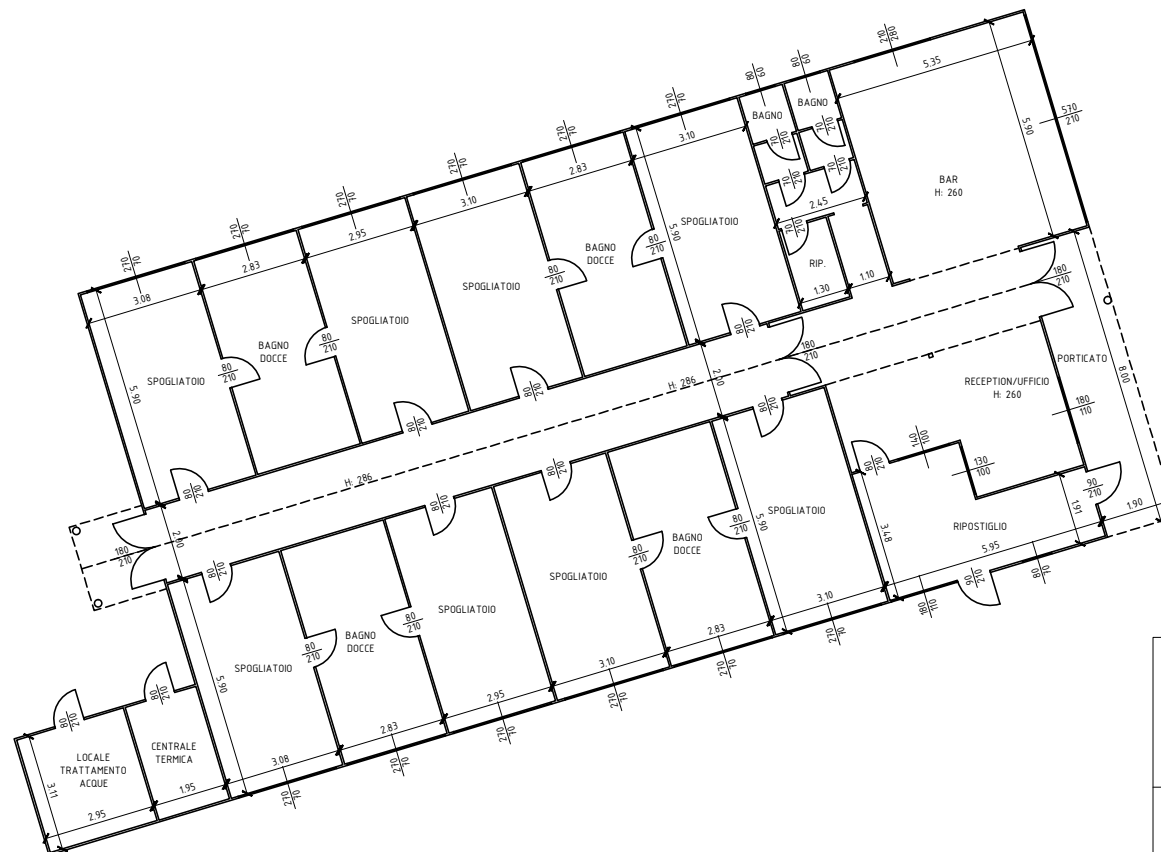
CORPO 9 - SPOGLIATOI CALCIO (SOTTO TRIBUNA)  
Piano Terra



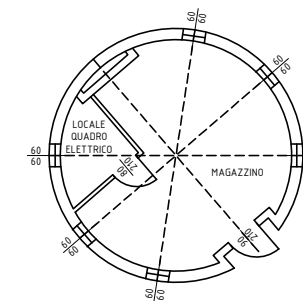
CORPO 9 - TRIBUNA  
Piano Primo



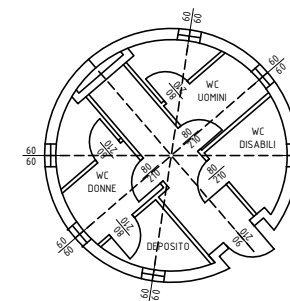
CORPO 15 - CENTRO AGGREGAZIONE ANZIANI  
Piano Terra



CORPO 10/11 - SPOGLIATOI/UFFICI/BAR  
Piano Terra



CORPO 14 - BLOCCHI LOCALI TECNICI  
Piano Terra



**COMUNE DI MONZA**  
UFFICIO IMPIANTISTICA SPORTIVA

**CENTRO SPORTIVO AMBROSINI**

PLANIMETRIE EDIFICI